

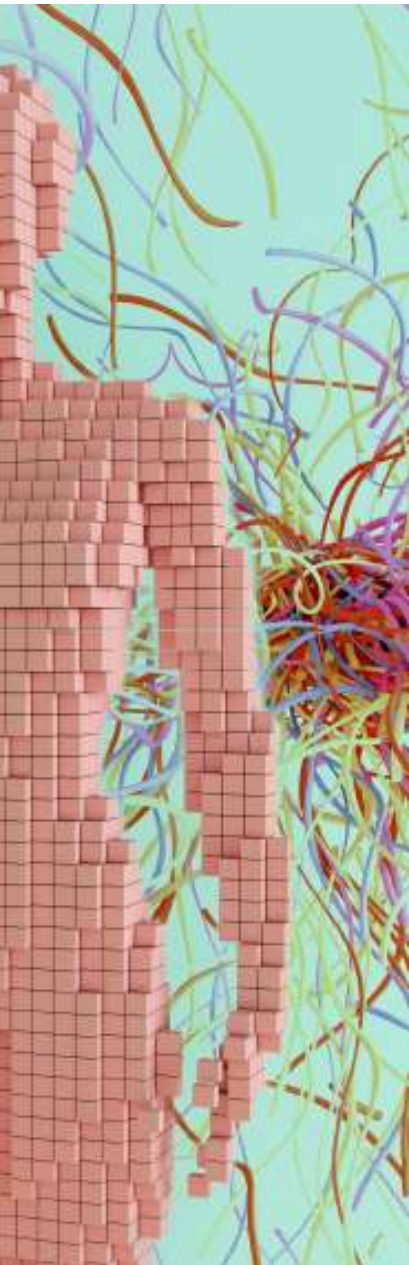


Health Data Science

Postgraduation



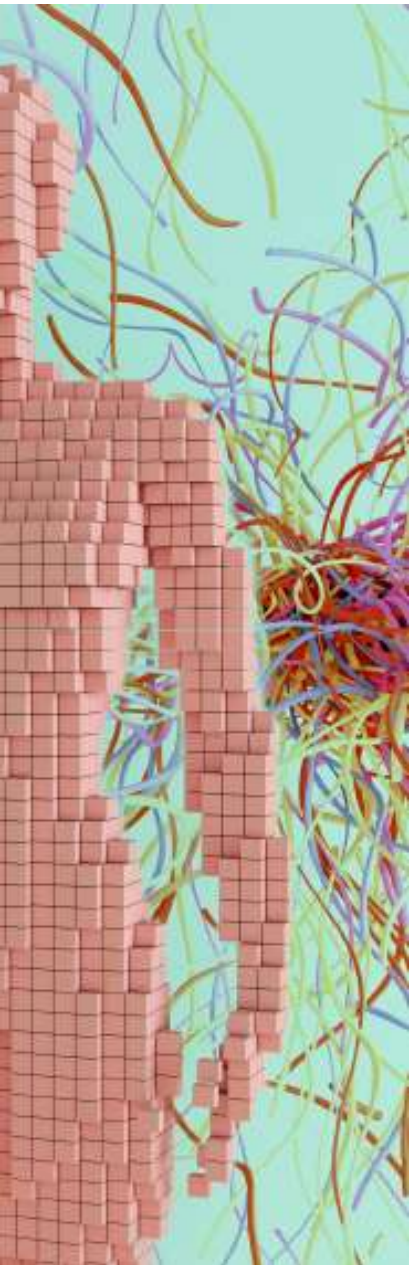
ESCOLA SUPERIOR DE
TECNOLOGIA DA SAÚDE
DE LISBOA
INSTITUTO POLITÉCNICO DE LISBOA



Why this course

Because optimizing your data science skills can improve your therapeutic options, your healthcare organization's outcomes and - most importantly - improve the health status of the population.

Because skills in health data analysis are as essential in an epidemic as in maintaining regular health care, thus crossing the different dimensions: clinical, risk assessment, management, etc.



About this course

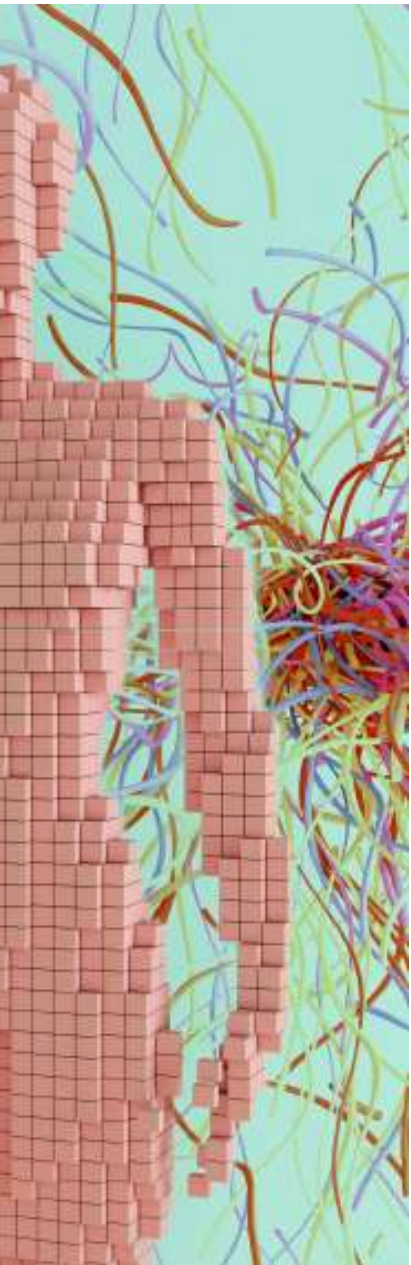


Meets data science requirements in the new health era, towards data-driven innovative health solutions.

This program is practical, cross-disciplinary and closely linked to Healthcare organizations and industry.

Blends Healthcare organizations with Academia & Research.

Focus on value creation and health outcomes, through a translational approach in health, informatics and mathematics.

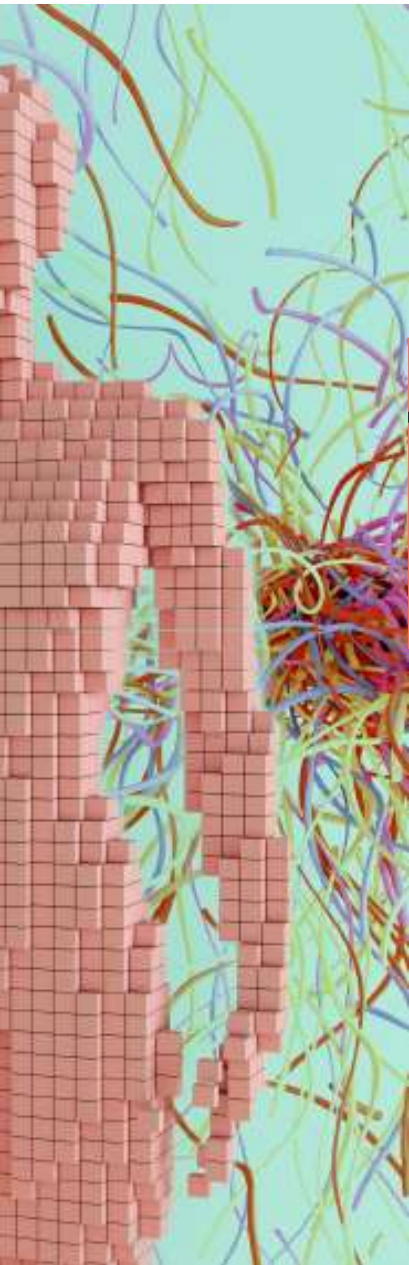


Who should take this course



Professionals with the desire to improve their analytical capacity in order to transform data into knowledge, who seek to solve new and challenging problems and intend to develop a career in an area with enormous potential for growth.

If you have a degree in health, management, engineering, mathematics, computing or similar areas and you work, or wish to work, in health organizations/health-related industry, this is an excellent opportunity to join our Team!



About this course

1 year 60 ECTS

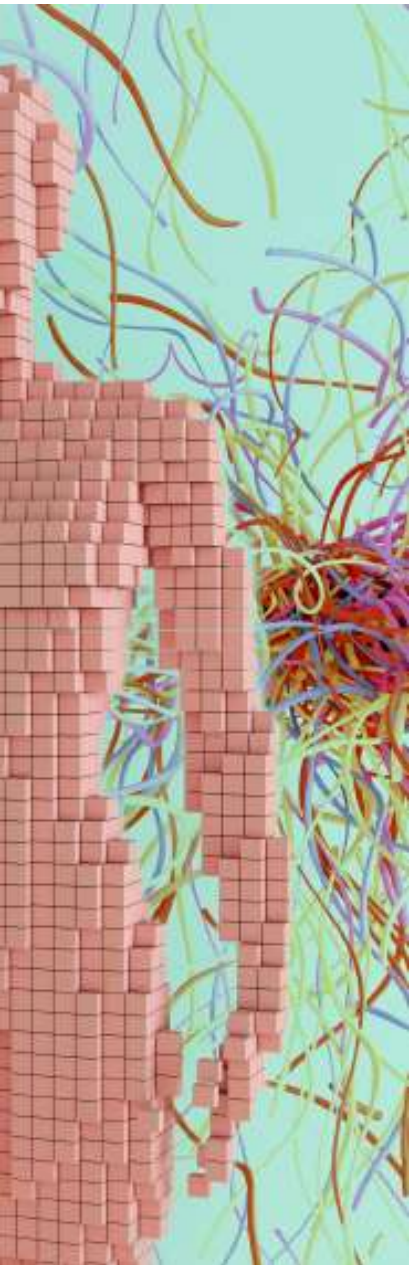


- _Global and Population Health
- _Analysis and Visualization of Health Data
- _Challenges of Data Science in Health

- _Programming Fundamentals
- _Databases and Data Management
- _Research Design in Health Organizations
- _Identification and Interpretation of Needs in the Context of Health Organizations

- _Multivariate Statistics
- _Machine Learning
- _Deep Learning

- _Big data and healthcare data management
- _National health information systems
- _Innovation and entrepreneurship



Program Council



Carina Silva, ESTeSL

PhD Probability and Statistics
Biostatistician



Gilda Cunha, ESTeSL
MSc Statistics and
Information Management



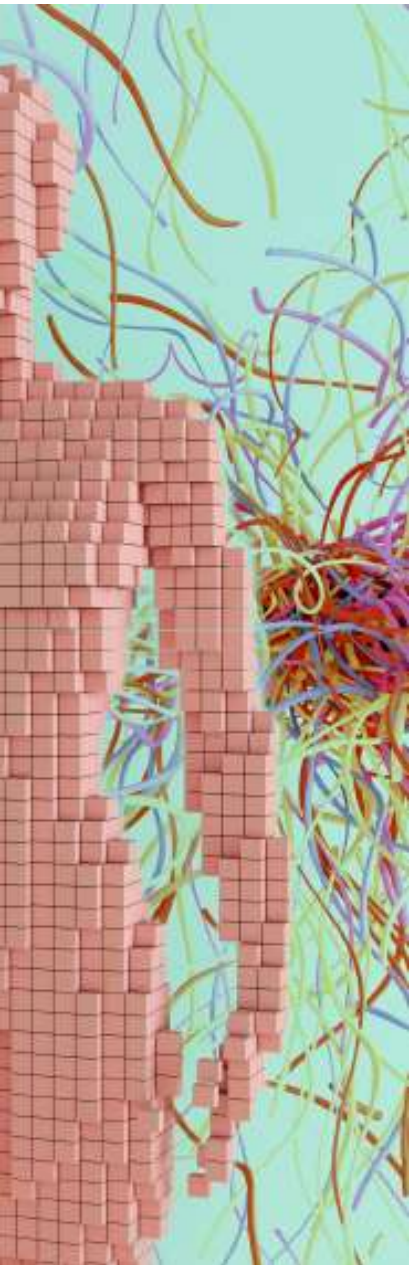
Ricardo Ribeiro, ESTeSL

PhD Biomedical Engineer
Medical Imaging Specialist

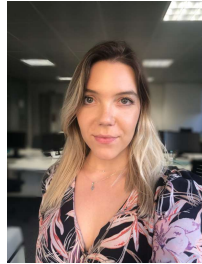


Marina Silva, ESTeSL

PhD Environmental Sciences



Our Team



Marta Sousa, Habber Tec



Patrícia Narciso, Habber Tec



André Carreiro, Fraunhofer Portugal



Ricardo Ribeiro, ESTeSL



Alexandra Cerqueira, HCBM



Anabela Coelho, UEvora



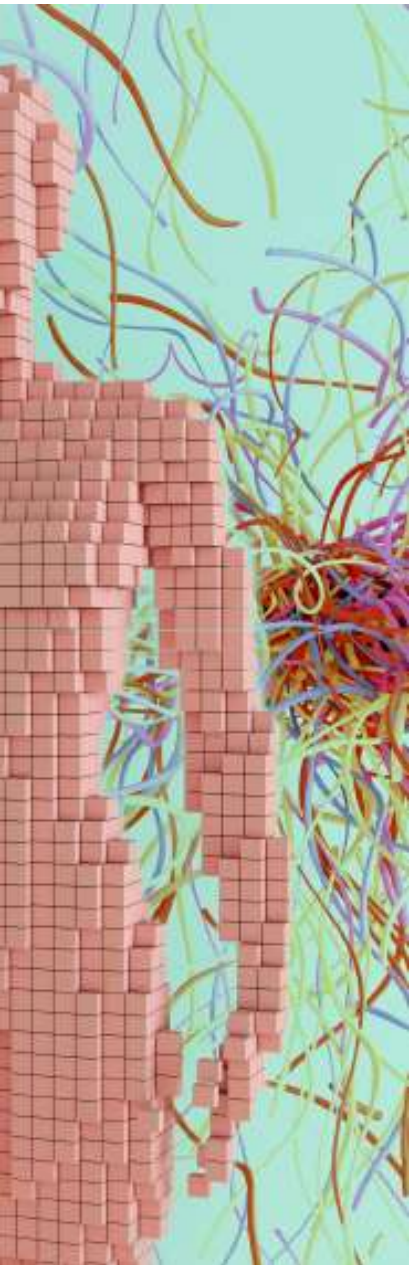
Marina Silva, ESTeSL



Carina Silva, ESTeSL



Bruno Trigo, BIQ Health Solutions



What to expect after this program

Student will gain skills in health data science with a solid academic background meshed with business methodologies to meet healthcare needs.

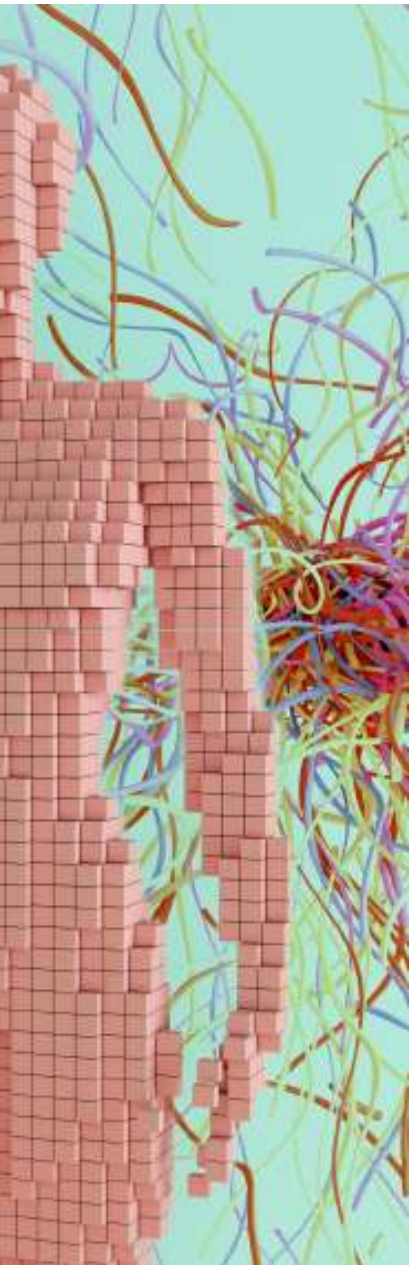
Employers include government and health institutions, technology companies, consulting and research firms.



Prize for the best student
1000 euros
(Sponsored by Glintt)



Optional Internships at
Glintt, a reference
company in the Iberian
Peninsula in Consulting
and Technological
Services

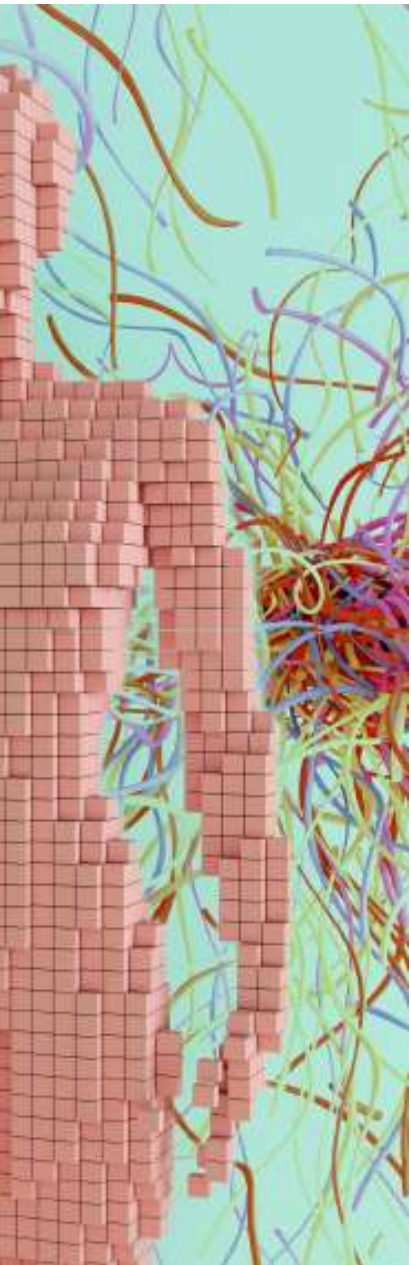


Important dates

Kick-off Lesson: 11 September

Classes will be held September to July

Online classes will be held on Thursday, Wednesday and Tuesday, from 5:00pm to 9:00pm

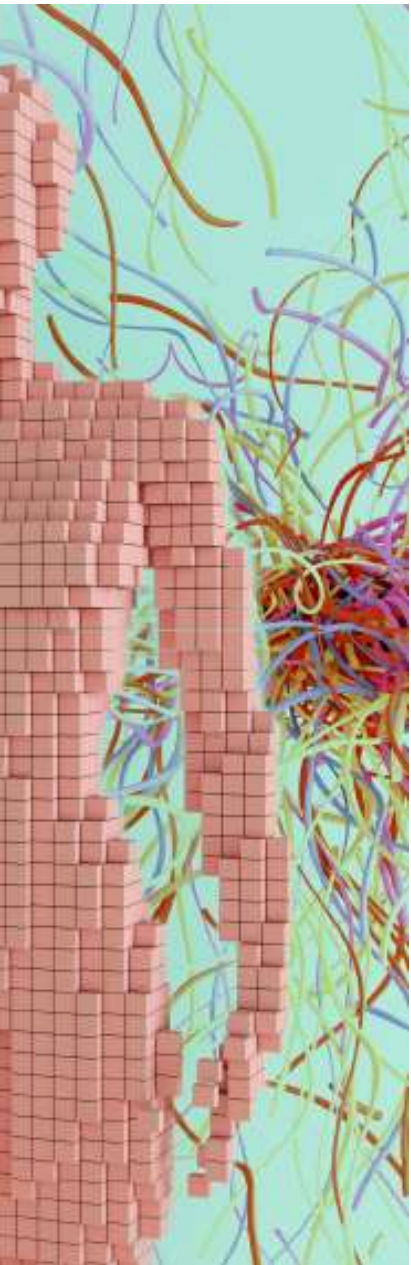


Stay tuned



Email: hds@estesl.ipl.pt

Page: <https://www.estesl.ipl.pt/cursos/pos-graduacoes/health-data-science>



CLEARING THE BOUNDARIES BETWEEN HEALTH AND
DATA SCIENCE